



# ASN C/S ILE D'YEU

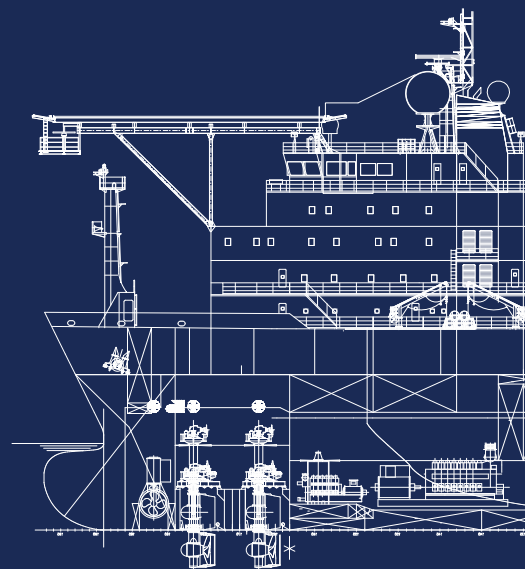
## CABLE LAYER VESSEL

### VESSEL SPECIFICATIONS

The Cable ship Ile d'Yeu is the latest addition to the ASN Installation Fleet. The vessel has been equipped specifically to perform installations of trans-oceanic submarine fibre optic cable.

The three main cable tanks of the vessel allow for the installation of up to 9600 mT of submarine cable, the highest capacity in the industry. The vessel is equipped with a 35mT Plough in order to provide the highest cable protection.

The vessel has a long history with its root in the submarine cable industry being built as a cable ship right before the ASN Ile de Class vessels in the Hyundai yard in South Korea. The vessel has been reconverted by ASN to the industry with the latest technology and all the ASN expertise.



**ALCATEL  
SUBMARINE  
NETWORKS**

**THINK AHEAD, TRUST ASN**

copyright 2023 | [communications@asn.com](mailto:communications@asn.com) | [www.asn.com](http://www.asn.com)

## Vessel Description

- TYPE ..... Cable laying vessel
- CLASSIFICATION ..... BV - I +HULL +MACH / Unrestricted navigation/  
F, PTR, +AUT-IMS +DYNAPOS-AM-AT-R
- POR ..... Marseille
- REGISTERED NUMBER ..... RI 937394
- IMO NUMBER ..... 9230414
- VESSEL BUILT ..... HMD Hyundai Mipo Dockyard Ulsan, South Korea, 2001
- DYNAMIC POSITIONING ..... DP II

## Main Dimensions

- LENGTH OVERALL ..... 147.07 m
- LENGTH BETWEEN PERPENDICULARS ..... 128.60 m
- BREADTH MOULDED ..... 27.00 m
- SUMMER DRAUGHT ..... 9.00 m
- DEADWEIGHT AT DRAUGHT ..... 11024 mT

## Cable Tank Capacities

- MAIN CABLE TANK ..... 3 x 1500 m3 / 3200 mT
- SPARE CABLE TANK ..... 1400 m3
- REPEATER STORAGE ..... 3x92

## Accommodations

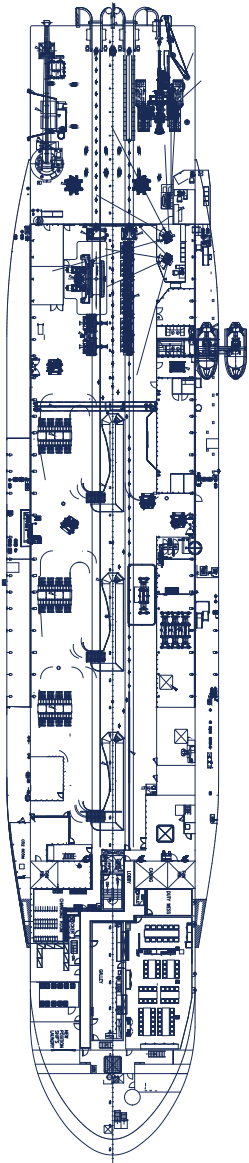
- HIGH CLASS CABINS ..... 6
- SINGLE CABINS ..... 51
- DOUBLE CABINS ..... 6

## Engine and Propulsion

- PROPULSION ..... 2x fs3500-671 mn - steerable thruster
- OUTPUT ..... 4500kw at 600rpm
- PROPELLER DIAMETER ..... 2x 3,4 m - fixed pitch
- MAX SPEED ..... 14 knots
- TRANSIT ECO SPEED ..... normal 12 knots / eco 10 knots

## Thrusters

- BOW THRUSTERS ..... 1x Lips CT200 - 900 rpm - 1320kw
- RETRACTABLE THRUSTERS ..... 2xLips-FS1510-350/1510 MNR - 2000kW at  
1200 rpm – CCW



**Auxiliaries**

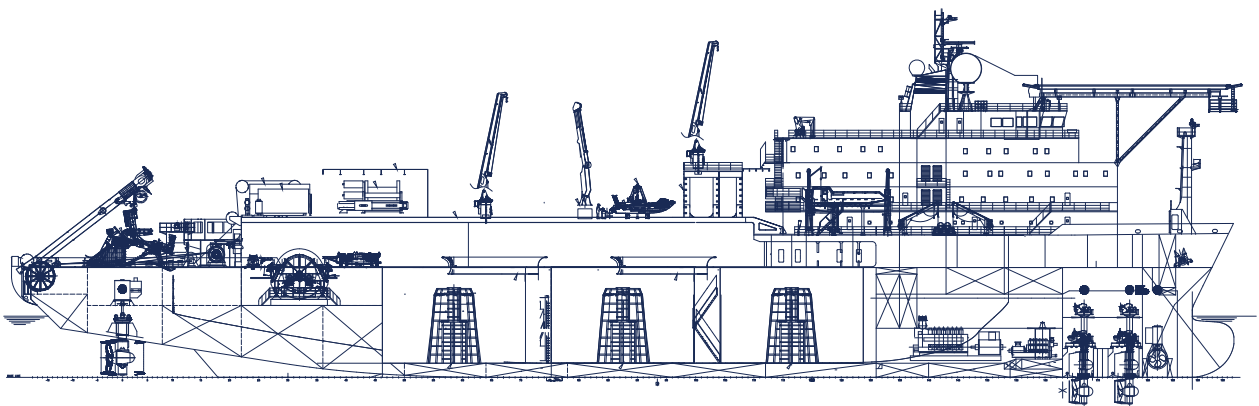
- MAIN DIESEL GENERATOR ..... 4-stroke non-reversing diesel engines
- D/G ENGINE TYPE ..... 4x man-Hyundai type 8I32/40
- RATING ..... 3840kw at 720 rpm
- VOLTAGE ..... 3x4160v, 60hz
- HARBOUR GENERATOR ..... 4-stroke non-reversing diesel engines
- D/G ENGINE TYPE ..... 1x man-Hyundai type 6I23/30h
- RATING ..... 750 kw at 900rpm
- VOLTAGE ..... 3x440v, 60hz
- FUEL/CONSUMPTION ..... Full speed: 50t/day  
Normal speed: 38t/day.
- EMERGENCY GENERATOR ..... Cummins 6cta8.3d(m)  
3x450v 188kw, 1800 rpm

**Cranes**

- OVERHEAD CRANE HANGAR ..... 1x EXO 3 mT, span: 15.6 m, travelling 59,8 m
- AFT KNUCKLE BOOM CRANE ..... 1x Dong nam 20 mT at 25 m
- DECK CRANE ..... 1x Sormec 15 mT at 7 m, 8.2 mT at 12.5 m  
2x Sormec 2 mT at 13 m  
1x Palfinger 2.5 mT at 12 m, 1,5 mT at 15 m
- FORWARD DECK CRANE ..... 2x 1.2 mT at 12.5 m
- MONORAIL E/R SPARE PART ..... 1x 2 mT
- MONORAIL E/R ..... 5x 1 mT
- MONORAIL REPEATER STORAGE ..... 1x 1,5 mT
- AFT DECK A-FRAME ..... Kongsberg/Odim 60 mT

**Main A-frame**

- SAFE WORKING LOAD ..... A-Frame SWL 50 tonnes
- PRINCIPAL DIMENSIONS OUTREACH ..... Passage height: 15.3 m  
Width inside: 13.3m  
From 170 deg outboard to 10 deg inboard



### Cable Installation Equipments

- SHEAVES ..... 1x cable repair sheave  
1x plough towing sheave  
1x cable laying sheave  
1x umbilical sheave
- TUGGER WINCH ..... 2x 9.3 mT at 16m/min  
Capacity: 105 m ø22mm
- DRUM CABLE ENGINE ..... 1x 4.0 meters diameter Parkburn, width: 1.1m  
2 Electric motors  
Max static tension: 30 mT  
Maximum Pull: 28 mT, up to 1 knot  
Maximum Speed: up to 8 knots, up to 3,5 mT  
Minimum Speed: 0,1% of speed range
- DOHB ..... 1x 4-electric wheel pairs Parkburn  
Max tension: 4 mT up to 4 knots  
Max speed: 8 knots up to 2 mT
- LINEAR CABLE ENGINE (LCE) ..... 1x 18-electric wheel pairs Parkburn  
Max tension: 18 mT up to 4 knots  
Max speed: 8 knots up to 9 mT
- TRANSPORT ..... 3x 1- Wheel pairs Parkburn  
Max tension: 1 mt up to 4 knots  
Max Speed 8 knots up to 0,5 mT
- POWER FEEDING EQUIPMENT ..... 1x ASN PFE 15 kV

### Plough

- DIMENSIONS ..... 10.7 m long (skids down, plough hinged, depressor down)  
6.9 m high (plough hinged)
- WEIGHT IN AIR ..... 35 mT
- BURIAL DEPTH ..... 2.20 m

### Survey & navigation equipment

- GYROCOMPASS ..... 3x Survey grade Gyrocompass
- DYNAMIC POSITIONING SYSTEM ..... Kongsberg SDP 22
- USBL ..... Sonardyne USBL System: Ranger 2
- HYDRO ACOUSTIC EQUIPMENT ..... Various Beacons available and compatible with  
Sonardyne Ranger 2 System
- ECHO SOUNDER ..... Shallow water: Skipper GDS101  
Deep water: Simrad EA640
- DIFERENTIAL GPS ..... 2x LD900 Veripos
- CABLE LAYING SOFTWARE ..... Makai Lay V6.2.0